



智通科創股份有限公司
WISELINK CO., LTD.

Investor Conference

2023.09.28

Safe Harbor Notice

- ◆ The content and related information in this briefing report and the synchronous announcement are sourced from Wiselink's inner and outer material, including the operation result, financial situation and the business development, et cetera. ◦
- ◆ No financial forecasting is released by Wiselink. Discrepancy may be existed between the actual result in the future and the estimated opinion to the company operation and business developing subjects indicated in this briefing report with respect to the financial and business part. The causes of the discrepancy may include the variation of market needs, price fluctuation, competition activities, international economic situation, exchange rate fluctuation, upper and downer stream supply chain, and any other risk factors that beyond Wiselink's control.
- ◆ The prospects to the future in this briefing report reflect Wiselink's vision of future. Wiselink is not responsible for any notification or update with regard to any change or adjustment to these prospects in the future.



Agenda

- ◆ Company profile
- ◆ Financial overview
- ◆ Outlook



Company Profile

Year of establishment 1978

Status IPO in Taiwan stock market in 2001(8932-TW)

Capital TWD\$670 Million(As of June 2023)

Chairman F.U. CHUNG

Main Products Coil Zipper、Invisible Zipper、Delrin Zipper、Metal Zipper、Zipper Accessories、Slider Series and Other Special Zippers.



Longtan, Taiwan

Date of Building : 1978

Area : 15,000 m²

Employee : 210



Kunshan, China

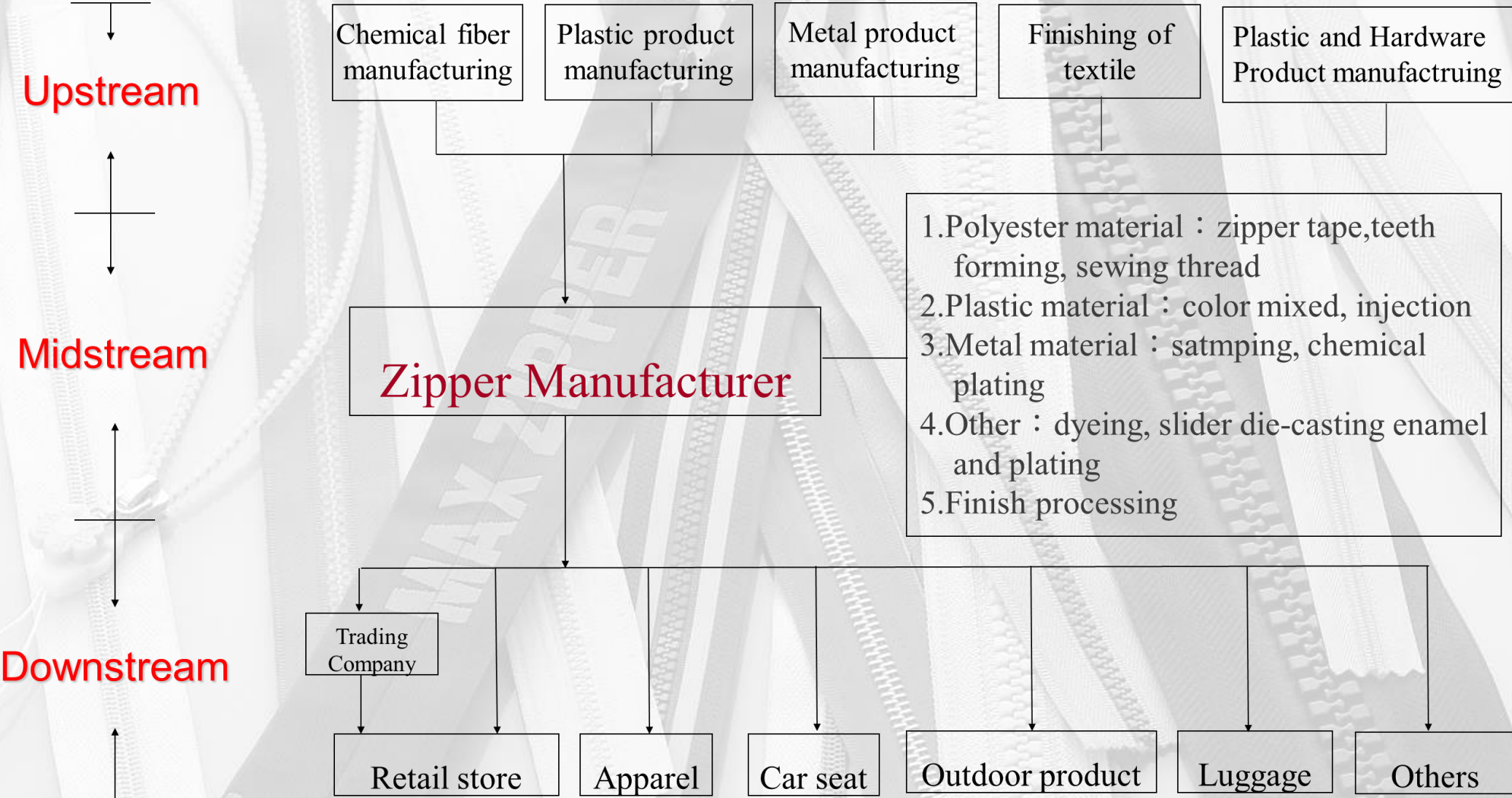
Date of Building : 2003

Area : 27,000 m²

Employee : 140



Industry Relevance



Brand Certification

Obtained nearly 60 international well-known brand certification

Industry	Retail	Apparel	Outdoor Product	Luggage	Car Seat
Brand name	JCPenny	Champion	EASTPAK	Samsonite	TOYOTA
	M&S	Wrangler	BURTON	NIKE	MAZDA
	macy's	Lafuma			
	TARGET	M&CO			
	WAL-MART	Orsay			



Function Products

REFLECTIVE LIGHT TRACING

Reflective elements as an important element of protective function, the use of the night is particularly important, the use of its material as a pattern, not only can improve visibility, but also can add fashion elements to a single product, try the stitching of reflective materials to improve the style of novelty.



Dull Colored WR Zipper

N51 MAX(T) A/L Slider
C0086 Cord Puller
Reflective Film 5mm



Reflective Yarn

#5 Delrin O/E Zipper
DX51 MAX A/L Slider

ACCESSORIES



Fashion Products

IRIDESCENT
ACCESSORIES SHOW
WORLD OF MAGIC

05



▲ T0042 (TPU001)
Woven Puller
≈115mm

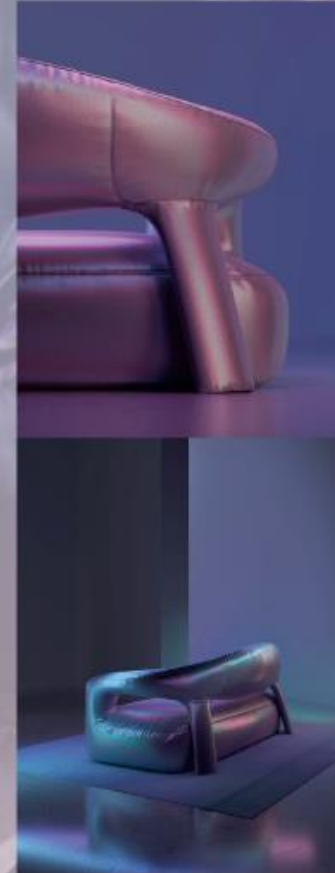


▲ Shiny Iridescent
Teeth

#5 Delrin O/E Zipper
D81 MAX(T)A/L Slider

▲ Shiny Flash Teeth

#5 Delrin O/E Zipper
D81 MAX(T)A/L Slider



Global Map



Consolidated Statements of Comprehensive Income

Consolidated Statements Of Comprehensive Income (In Thousands of New Taiwan Dollars)	For the Six Months Ended June				Difference	
	2023		2022		Amount	%
	Amount	%	Amount	%		
Operating revenue	483,179	100	526,728	100	(43,549)	(8)
Operating costs	(333,514)	(69)	(422,887)	(80)	89,373	(21)
Gross profit	149,665	31	103,841	20	45,824	44
Operating expenses	(93,357)	(20)	(81,339)	(16)	(12,018)	15
Profit from operations	56,308	11	22,502	4	33,806	150
Non-operating income and expenses	(1,434)	-	4,014	1	(5,448)	(136)
Profit before income tax from continuing operations	54,874	11	26,516	5	28,358	107
Income tax expense	(11,385)	(2)	(5,312)	(1)	(6,073)	114
Net profit for the period	43,489	9	21,204	4	22,285	105
Earnings per share (In Dollar)	0.65		0.35		0.30	86

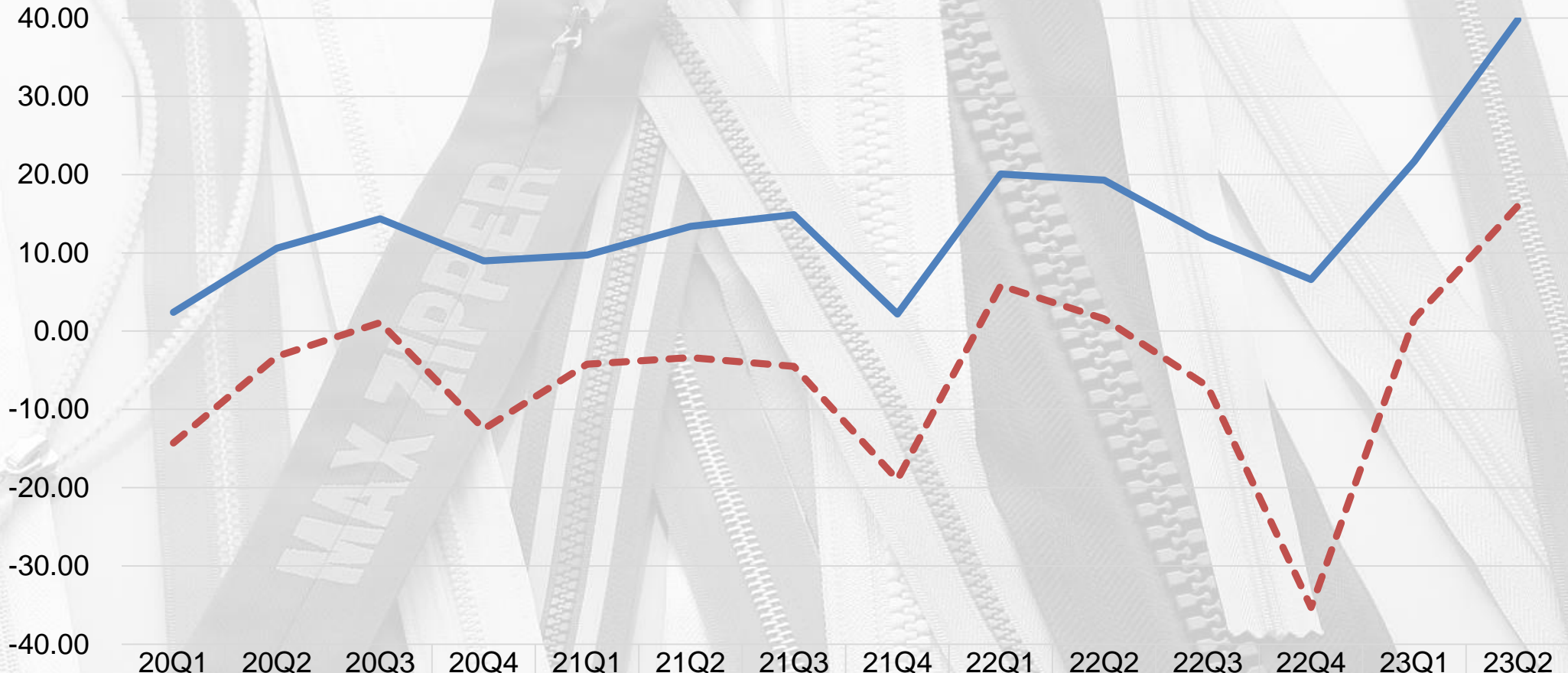


Consolidated Balance Sheets

Consolidated Balance Sheets (In Thousands of New Taiwan Dollars)	June 30,2023		June 30,2022		Difference	
	Amount	%	Amount	%	Amount	%
Cash and cash equivalents	400,537	24	380,476	24	20,061	5
Trades receivables	202,867	12	227,725	14	(24,858)	(11)
Inventories	92,551	6	120,743	8	(28,192)	(23)
Investments accounted for using the equity method	5,502	-	6,621	-	(1,119)	(17)
Property, plant and quipment	535,230	33	434,144	27	101,086	23
Total assets	1,647,547	100	1,611,479	100	36,068	2
Total current liabilities	660,335	40	778,900	48	(118,565)	(15)
Total non-current liabilities	151,658	9	103,607	7	48,051	46
Total liabilities	811,993	49	882,507	55	(70,514)	(8)
Total equity	835,554	51	728,972	45	106,582	15



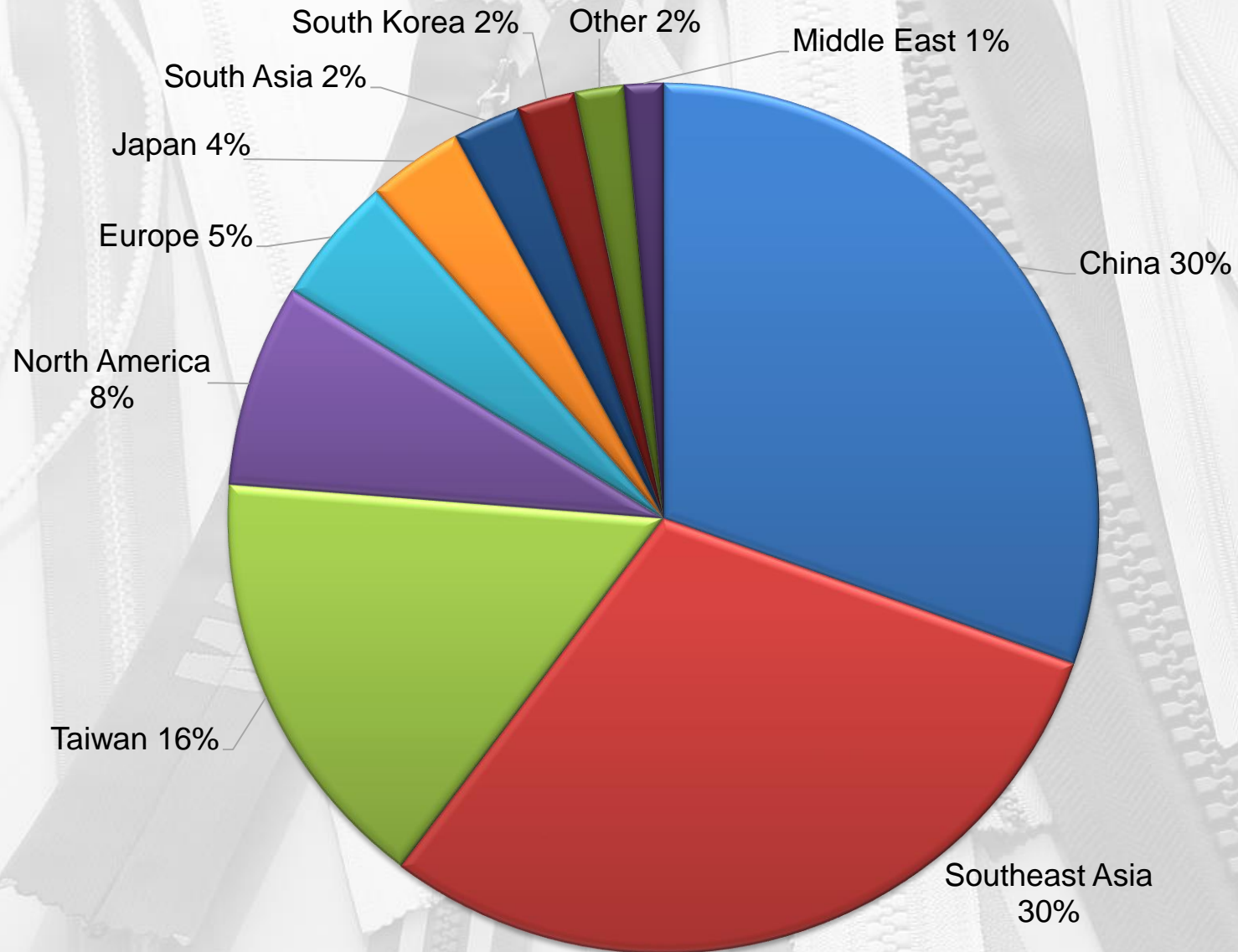
Quarterly Net Profit



	20Q1	20Q2	20Q3	20Q4	21Q1	21Q2	21Q3	21Q4	22Q1	22Q2	22Q3	22Q4	23Q1	23Q2
— Gross Margin%	2.41	10.61	14.35	8.97	9.71	13.39	14.88	2.19	20.07	19.28	12.07	6.60	21.69	39.79
- - Net Profit Margin%	-14.28	-3.23	1.08	-12.50	-4.22	-3.37	-4.49	-18.98	5.81	1.56	-7.03	-35.29	1.61	16.02



Global Sales Distribution



Thank you !



智通科創股份有限公司
WISELINK CO., LTD.